



2024 | BOSTON  
**INNOVATE**  
JMT CONSULTING

# Leadership From the Inside Out: A Guide for Women (2H)

Jacki Davidoff, Davidoff Strategy

**JMT**  
CONSULTING

THE EXPERTS IN  
MISSION-DRIVEN  
NONPROFIT FINANCE  
©JMT Consulting. All rights reserved.



## Introduction



### Jacki Davidoff

- Principal and Executive Leadership Coach, Davidoff Strategy
- Masters in Transformational Leadership & Coaching
- Immediate past Board Chair, Chicago Women in Philanthropy

### *Developing Mission-Driven Leaders and Organizations*

- *High-level leadership development, executive team training, and facilitation for national and regional organizations and leaders*
- *Specializes in the contribution of women/women of color*



## Leaders and organizations supported include:



Smithsonian



Planned Parenthood  
Federation of America





## In this session:

- You will learn that leadership is an inside-out experience, especially for women.
  - To the extent that you are learning and growing, you will lead your team, colleagues, and clients to learn and grow.
- You will learn to orient to principles, and help create a satisfying workplace culture.
- You will develop your capacity to lead in an environment of unknowns.





## In this session:

- You'll learn to question your thoughts and assumptions.
- You'll explore the trap of perfection.
- You'll see how the “imposter syndrome” can encourage women to avoid responsibility and play small.



## Small Group Share

- Say hello to your group of 3.
- One person speaks at a time.
- Your partners listen without interrupting, holding open space.
- Switch to next person until all three of you have spoken.



Share with your group of 3:

What would you like to get out of this meeting?



Unknowns –such as external changes in the environment, and internal changes in our organizations – call out more in each of us as leaders.







## Women Mission-Drivers:

- Continually look for ways to improve situations, teams, departments, their organization, their client experiences
- Seek to develop themselves as more effective and increasingly self-aware leaders
- Intend to learn from their mistakes so they can do it better next time (rather than blame themselves)
- Increase their capacity to take risks – because they use each situation to learn and grow



Women are capable of thriving in the unknown  
because  
we see **possibilities.**



## Paired Share

- Form a group of 2.
- One person speaks at a time
- Your partner listens without interjecting, holding open space.
- Switch turns



Identify something in your organization that you are fearful of – it could be the loss of revenue, a change in leadership, a new initiative, or new team you will be managing.

What is one next step you will take as a woman mission-driver to create security and satisfaction for yourself?



Women mission-drivers develop their ability to ride challenging situations by **attuning to their emotions** and **talking through their emotions**



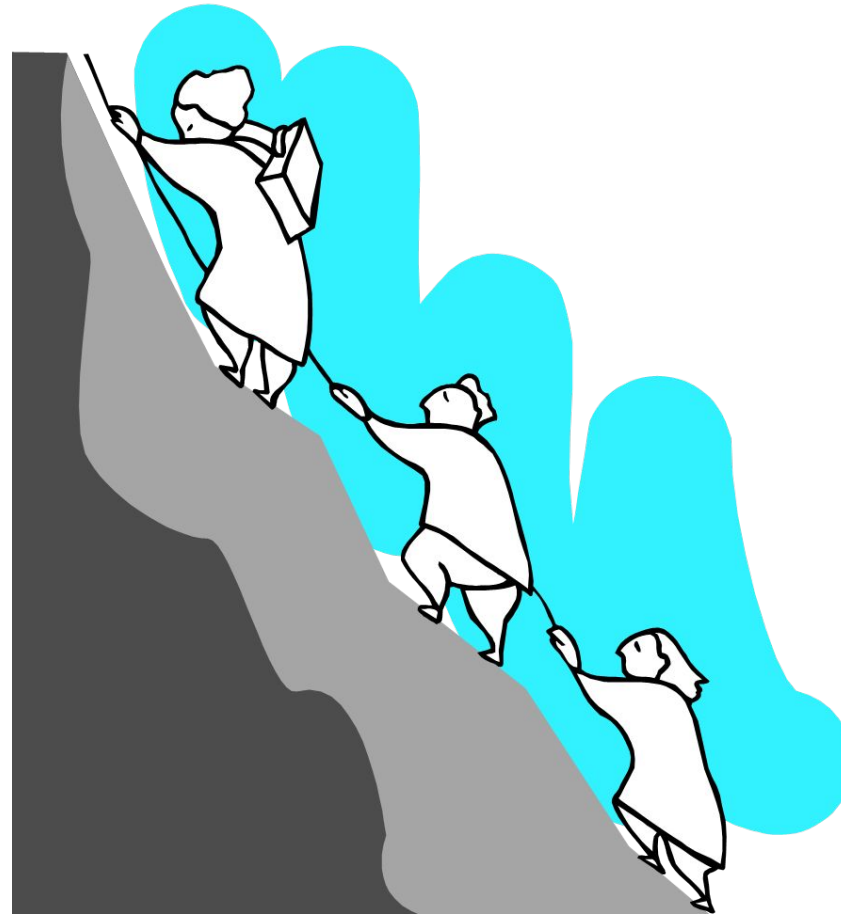
## Women mission-drivers choose to **expand and increase** **our ability to navigate change**







Women mission-drivers acknowledge the vulnerability of  
**stepping into the unknown.**





Women mission-drivers expand beyond our self concept of ourselves,  
which is limited!

We ask for outside support from colleagues, advisors, mentors,  
peers, friends.



You have choices in every moment to step into the unknown of  
**discovering** your capacities.



## Choose your focus going forward (pick one)

- Women mission-drivers develop their ability to ride challenging situations by **attuning to their emotions and talking through their emotions.**
- Women mission-drivers choose to **increase our ability to navigate change.**
- Women mission-drivers **acknowledge the vulnerability of stepping into the unknown.**
- Women mission-drivers expand beyond our self-concept of ourselves, which is limited! **We ask for outside support from colleagues, mentors, peers, friends.**



## Extra resources for Women Mission-Drivers:

- [\*\*8 Ways to Live a Mission-Driver Life\*\*](#)
- [\*\*Leading Through Crisis: A Mission-Driver's Guide\*\*](#)
- [\*\*Mission-Driven Teaming E-book\*\*](#)
- [\*\*Women's Leadership Groups\*\*](#)







Feel free to reach out:



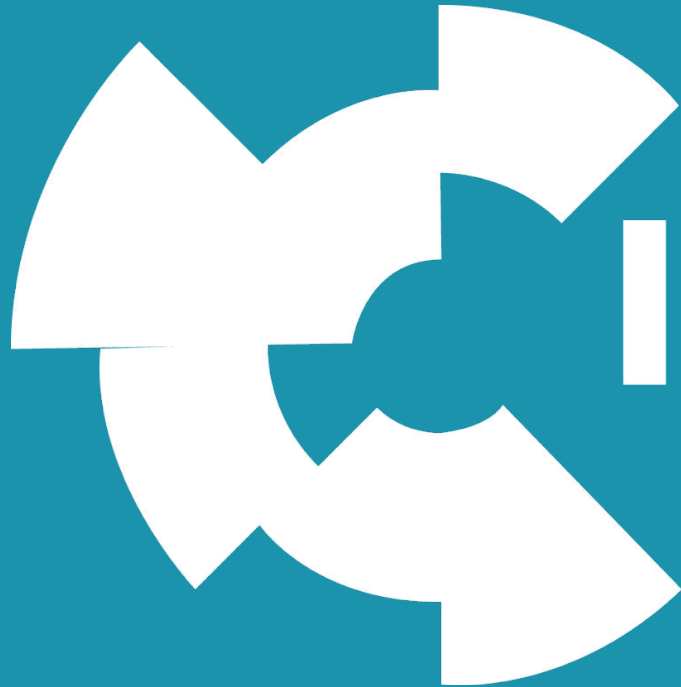
DAVIDOFF

**Jacki Davidoff**

Principal and Executive Leadership Coach

[jacki@davidoffstrategy.com](mailto:jacki@davidoffstrategy.com)

773.791.2831



**2024**

**INNOVATE**

JMT CONSULTING

---

BOSTON